

EPIC CARAVAN 208B

Cruise Faster Or Reduce Fuel Flows—Now the Choice is Yours!

EPIC Caravan reduces drag in all flight phases while offering the option to add nearly 5 knots cruise speed at the same power setting, or reduce fuel flows and lower ITTs—thereby reducing engine wear and maintenance, and making operations more cost-effective and

environmentally friendly. In addition, the Dual Aft Body Strakes enhance pilot control and handling qualities; and the Forward Cargo Pod Fairing eliminates the need for a cargo pod de-ice boot, further reducing maintenance costs for the life of the aircraft.



CARAVAN 208B DRS CONFIGURATIONS	FORWARD FAIRING	DABS	MSRP PRICE	INSTALLATION TIME
Dual Aft Body Strakes (DABS)		●	\$17,500	32 Hours
EPIC Package Deal With Flight Manual Supplement				
EPIC Caravan	●	●	\$29,900	65 Hours

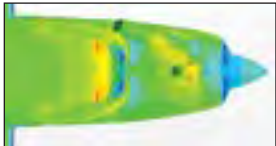
EPIC Caravan Elements



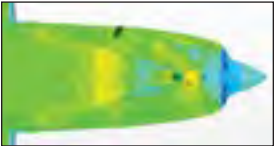
Forward Cargo Pod Fairing

Forward Cargo Pod Fairing

- Reduced drag results in increased climb and cruise performance
- With Raisbeck's design, the need for a cargo pod de-icing boot is eliminated, resulting in lower maintenance costs and less downtime with no impact on the aircraft's FIKI authorization
- The forward fairing's streamlined design eliminates the trapping of airflow behind the nose gear and in front of the leading edge of the cargo pod



Baseline highlights high drag regions at front of cargo pod



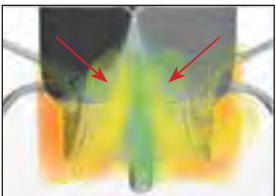
Raisbeck fairing reduces drag and smooths airflow at front of cargo pod



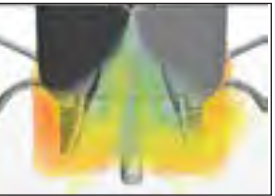
Dual Aft Body Strakes

Dual Aft Body Strakes

- Decreased drag results in increased climb and cruise performance
- Pilot control/handling qualities are enhanced
- Equivalent vertical tail area is increased, smoothing the airflow from the cargo pod and forward fuselage, thereby improving directional stability and ride comfort



Baseline highlights high drag and turbulent airflow under aft fuselage, creating drag and inducing yaw



Raisbeck strakes reduce drag and smooth airflow under aft fuselage, eliminating yaw and improving control/handling

Increasing your operating profit

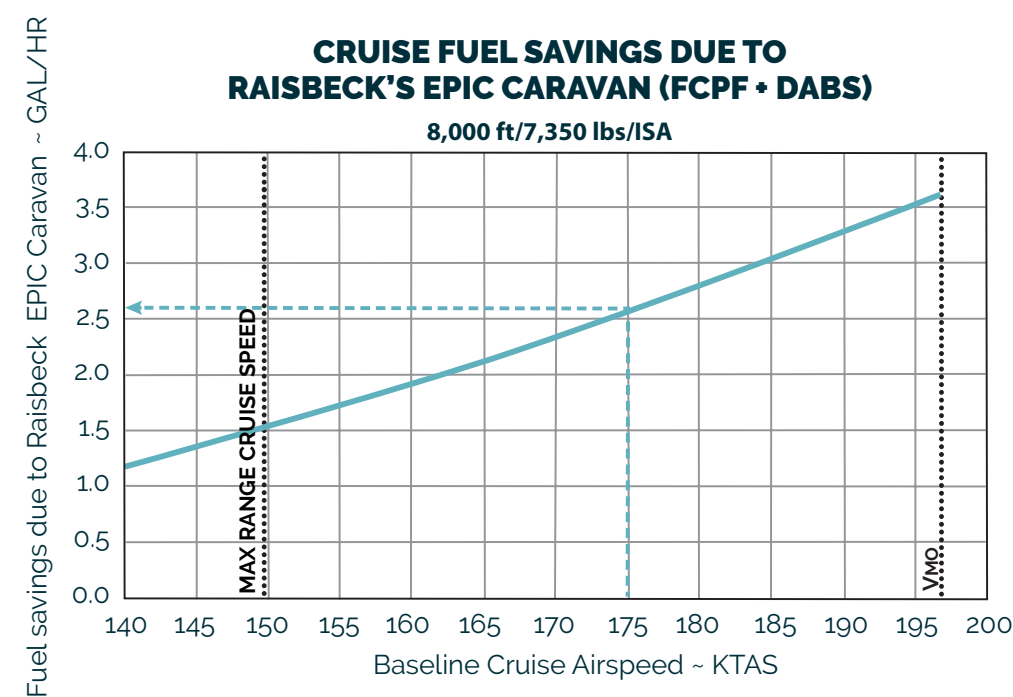
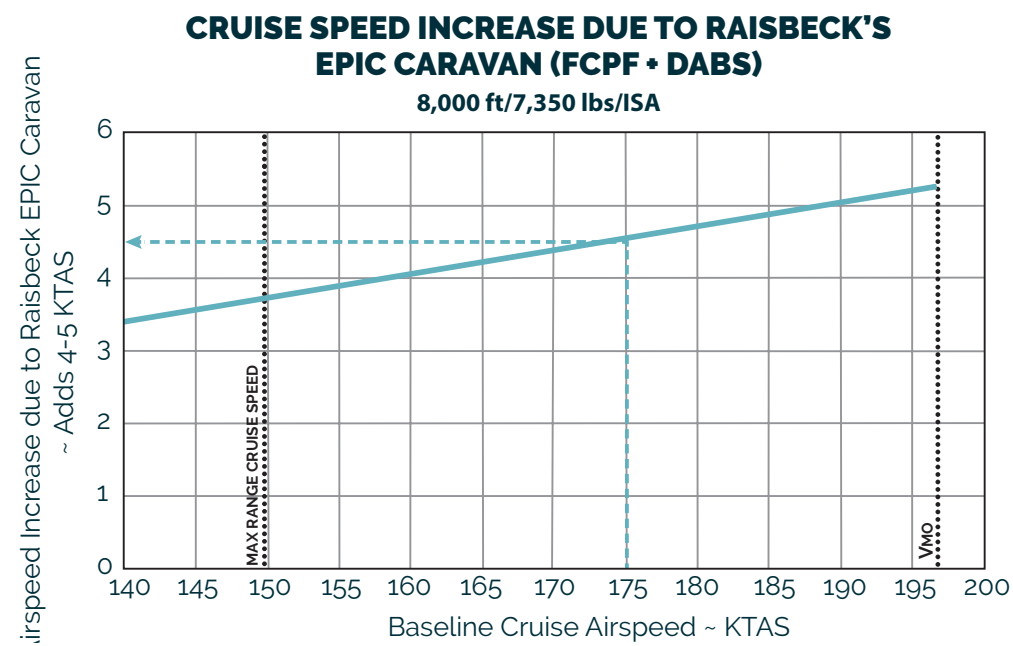
The Cessna Caravan has long been recognized as a dependable, utilitarian, single-engine turboprop aircraft with a robust design and workhorse attitude. In keeping with Raisbeck's mission to improve the productivity and efficiency of business aircraft, Raisbeck's team of engineers saw a clear opportunity with the Cessna Caravan 208B equipped with a factory cargo pod to reduce drag, thus increasing the aircraft's cruise speed, reducing fuel consumption and reducing engine ITT. Reducing drag will significantly improve the Caravan's overall efficiency and increase profitability for its operators.

EPIC Caravan is the end product of that vision: A drag reduction system engineered to be as tough as the Cessna Caravan 208B that gives operators the choice of faster cruise speeds or reduced fuel flows and ITT, making operations more cost-effective, flexible and profitable. As a bonus, lower fuel flows result in lower emissions, making operations more environmentally friendly.

EXPANDING YOUR OPERATIONAL CHOICES

EPIC Caravan Flight Test Results

Let's talk about the data recorded over hundreds of hours of flight tests for the Cessna Caravan 208B



Reduction in ITT due to Raisbeck EPIC Caravan ~ DEG C

